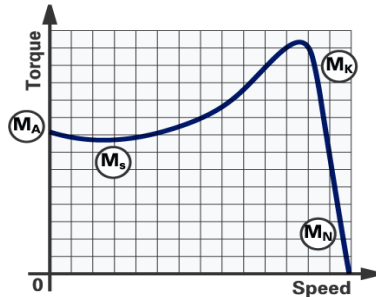
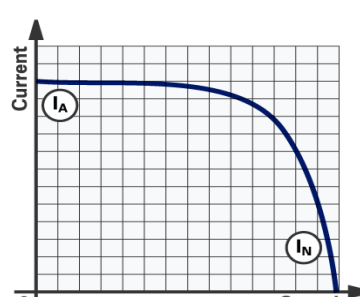

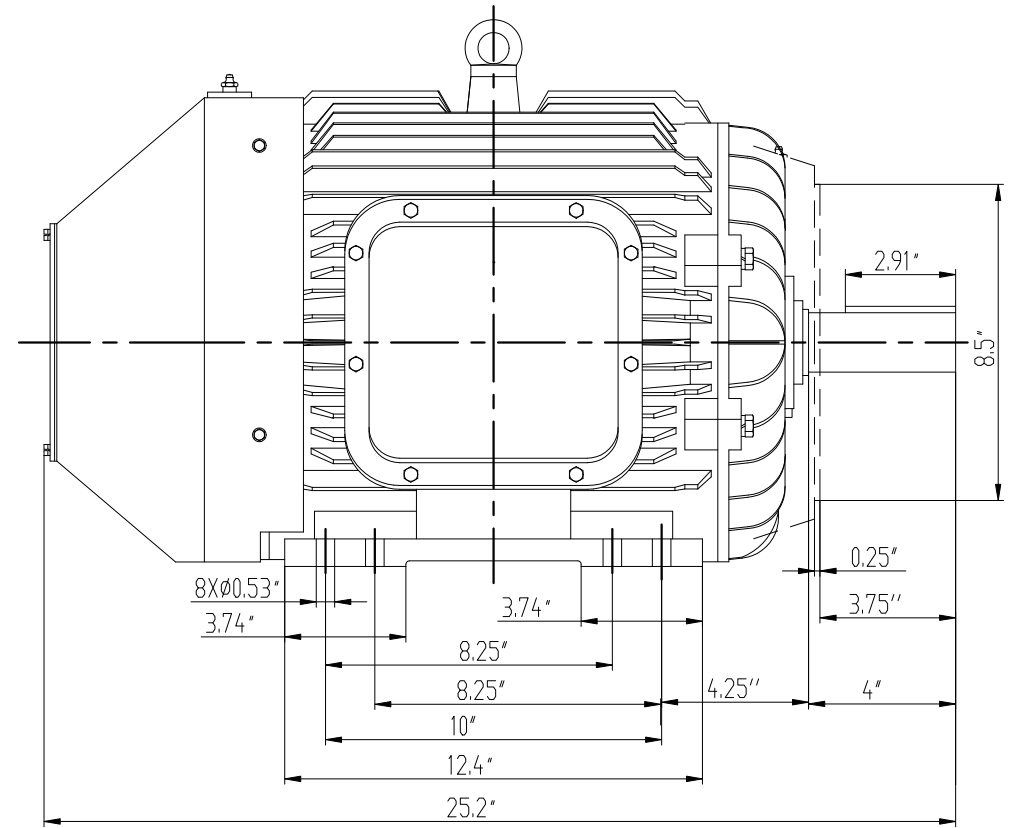
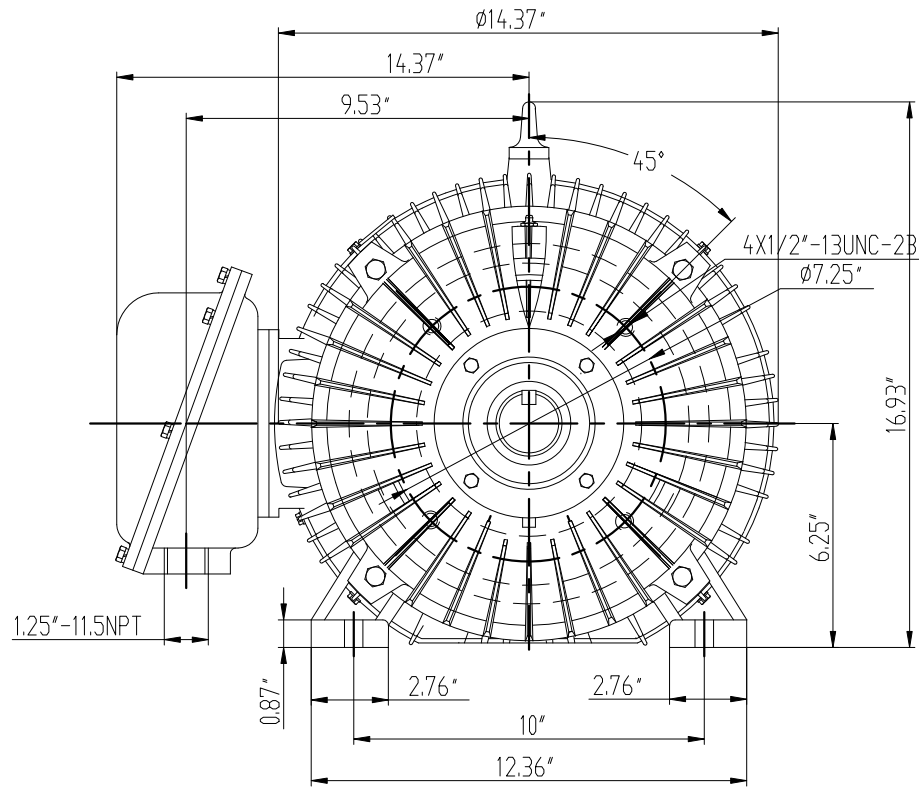


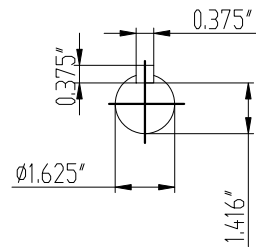
Motor Data Sheet

Supplied To.				Type Code		Frame Ref.			
				MC2N020-9		256T			
Manufacturing Standard NEMA MG-1, IEEE841				Starting Method		Output			
Frame Material Cast Iron		Mounting F1/F2		20		Hp			
All Data Below based on 460V @ 60hz				VFD Duty Variable torque 10:1 Constant torque 5:1		Supply			
Item No.				L.R. PF		460			
Sales order / Line no.				0.367		V			
Account No.				Amps		@460V			
Load (Hp)		Full	3/4	22.8		22.8			
Efficiency		91	90	Hertz		60			
Power Factor		0.88	0.89	N.L. amps		3.3			
Amps (Ia) at 460V		22.8	17.5	N.L. PF		0.2			
Speed (rpm)		3531	3571	Poles/rpm		2 / 3600			
Speed / Torque Curve				Duty		Cooling Code			
				S1		TEFC/IC411			
				Efficiency		Insulation		Temperature rise Class	
PREMIUM		F		B		Phase			
3		1.15		cos Ø		IP			
0.88		55		Noise pressure level at 1m no load					
77				dB(A)					
DE bearing Ref.				6209/C3					
NDE bearing Ref.				6209/C3					
Lubrication grease				Lubrication interval (hrs)					
DE 4650				NDE 4650					
NDE 4650				Rotor inertia		0.065			
kgm/sq		Vibration levels less than		1.8		mm/sec			
Shaft details		Ø		1.625" x 4"		LONG EXT'N			
T.Box entry		1-1/4"NPT		Motor weight (Approx. net)					
368.235				lb					
Speed / Current Curve				L.R. Time hot					
				22.9				secs	
				L.R. Time cold				56.3	
secs				A.R.T. 100% Volts					
22.9				secs					
A.R.T. 80% Volts				37.7					
secs				Number of terminals					
3 wire				NEMA Design letter					
G				Maximum volts drop at start:					
20%				Maximum Altitude					
3300				ft					
Ambient temp range				-20		- 40			
°C				Thermal time constant					
90 Minutes				Direction of rotation					
CW/CCW/BI				Winding thermistors fitted					
As Option				Winding thermostats fitted					
As Option				Anti condensation heaters					
1/120V/75W				Volts					
LRC (DOL) (Ia/In)		5.7	FLC	165.6		amps			
LRC (DOL) 80% V		3.4	FLC	78		amps			
External inertia (WR^2)				KGM^2					
No of starts/Hr with above inertia				Starting time with above inertia					
Secs				Marking					
 Class 1 Div 2 Grps A,B,C,D				Certificate No.					
Remarks									

1AP.050.0554.1-8WX



MODEL
NSHE254T/TC-2 15HP
NSHE256T/TC-2 20HP
NSHE254T/TC-4 15HP
NEHE256T/TC-4 20HP
NSHE254T/TC-6 7.5HP
NSHE256T/TC-6 10HP
NSHE254T/TC-8 5HP
NSHE256T/TC-8 7.5HP



LET	REVISION	BY	DATE
DESIGN	REN XIADHUA		
REVIEW	XIE XIADLONG		
APPROVE	YU JIABIN		
DATE	20170522		

NSHE250 MOTOR

F-1

1AP.050.0554.1-8WX

WEIGHT	SCALE
	1:1

