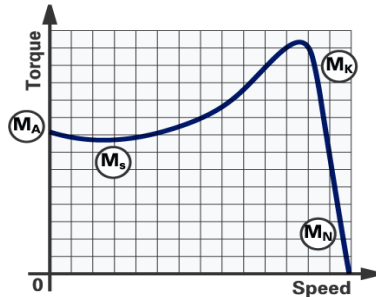
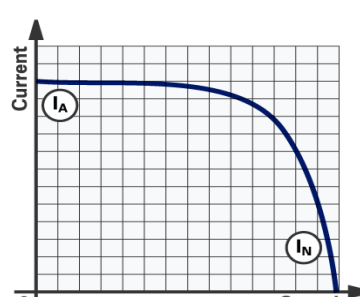

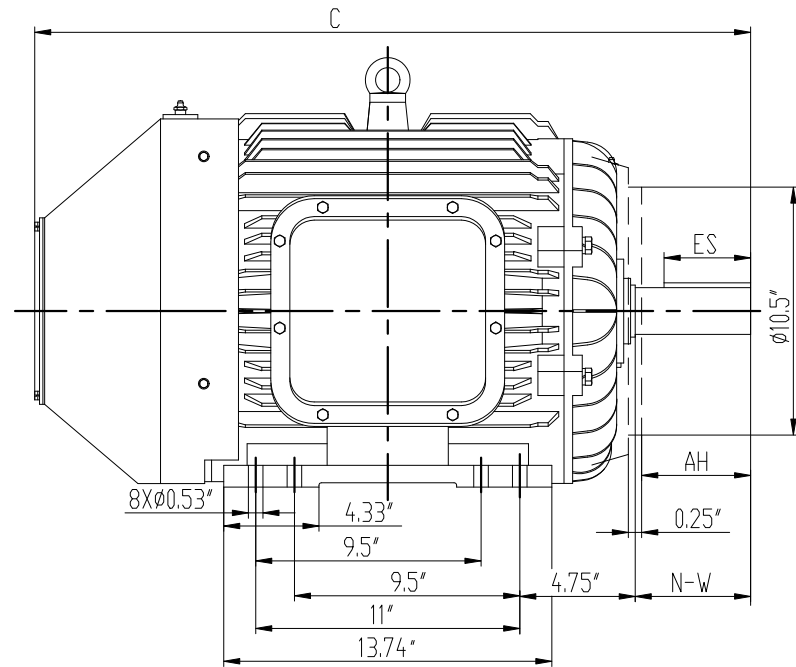
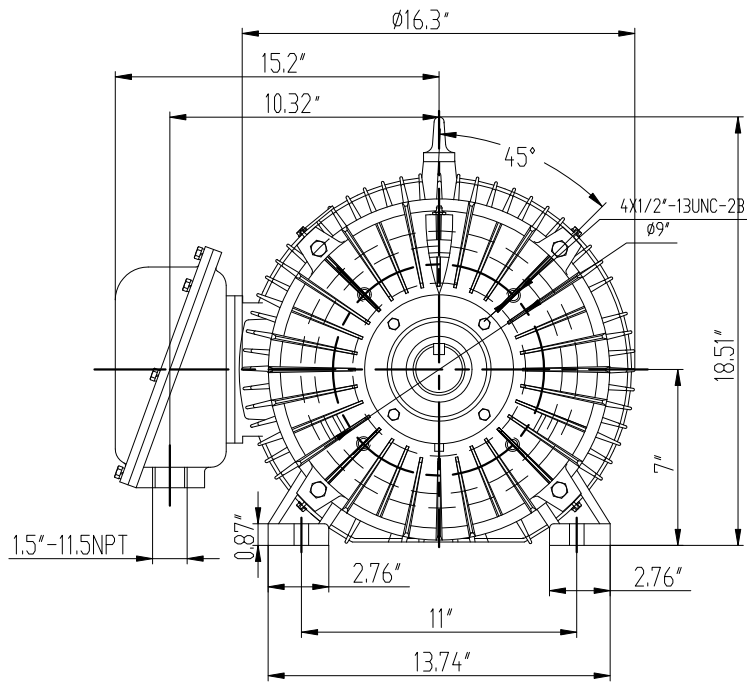
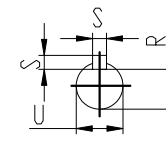


Motor Data Sheet

Supplied To.				Type Code		Frame Ref.	
				MC2N025-9		284TS	
Manufacturing Standard NEMA MG-1, IEEE841				Starting Method		Output	
Frame Material Cast Iron		Mounting F1/F2		25		Hp	
All Data Below based on 460V @ 60hz				VFD Duty Variable torque 10:1 Constant torque 5:1		Supply	
Item No.				L.R. PF		460	
Sales order / Line no.				0.284		V	
Account No.				Amps		@460V	
Load (Hp)		Full	3/4	27.5		27.5	
Efficiency		91.7	91.9	Hertz		60	
Power Factor		0.88	0.88	N.L. amps		4.2	
Amps (Ia) at 460V		27.5	21.7	N.L. PF		0.2	
Speed (rpm)		3560	3570	Poles/rpm		2 / 3600	
Speed / Torque Curve				Duty		Cooling Code	
				S1		TEFC/IC411	
				Efficiency		Insulation	
PREMIUM		F		B		Phase	
3		1.15		cos Ø		IP	
0.88		55		Noise pressure level at 1m no load			
DE bearing Ref.				82 dB(A)			
NDE bearing Ref.				6310/C3			
Lubrication grease				6310/C3			
Lubrication interval (hrs)				DE 3800			
				NDE 3800			
FLT (Mn)				36.5		ft-lb	
LRT (DOL) (Ma/Mn)		1.3	FLT	46.9		ft-lb	
LRT (DOL) 80% V		0.8	FLT	30.0		ft-lb	
PUT (Ms/Mn)		0.7	FLT	26.3		ft-lb	
POT (Mk/Mn)		2.9	FLT	106.9		ft-lb	
Speed / Current Curve				Motor weight (Approx. net)		511.56 lb	
				L.R. Time hot		46.4 secs	
				L.R. Time cold		98.3 secs	
LRC (DOL) (Ia/In)				5.7		FLC	
				208.2		amps	
LRC (DOL) 80% V				3.6		FLC	
				98		amps	
External inertia (WR^2)				KGM^2			
No of starts/Hr with above inertia							
Starting time with above inertia				Secs			
Remarks				Motor weight (Approx. net)		511.56 lb	
				L.R. Time hot		46.4 secs	
				L.R. Time cold		98.3 secs	
				A.R.T. 100% Volts		46.4 secs	
				A.R.T. 80% Volts		74.3 secs	
				Number of terminals		3 wire	
				NEMA Design letter		G	
				Maximum volts drop at start:		20%	
				Maximum Altitude		3300 ft	
				Ambient temp range		-20 - 40 °C	
				Thermal time constant		90 Minutes	
				Direction of rotation		CW/CCW/BI	
				Winding thermistors fitted		As Option °F	
				Winding thermostats fitted		As Option °F	
				Anti condensation heaters		1/120V/75W Volts	
				Drawing number		1AP.050.0274.1WXY	
				Certifying Authority		CSA (C=US)	
				Certificate No.			
				Marking		 Class 1 Div 2 Grps A,B,C,D	



MODEL	ES	U	R	S	N-W	C
NSHE284TS/TSC-2 25HP	1.93	Ø1.625	1.416	0.375	3.25	27.16
NSHE286TS/TSC-2 30HP	1.93	Ø1.625	1.416	0.375	3.25	27.16
NSHE284TS/TSC-4 25HP	1.93	Ø1.625	1.416	0.375	3.25	27.16
NSHE286TS/TSC-4 30HP	1.93	Ø1.625	1.416	0.375	3.25	27.16
NSHE284T/TC-4 25HP	3.3	Ø1.875	1.591	0.5	4.62	28.54
NSHE286T/TC-4 30HP	3.3	Ø1.875	1.591	0.5	4.62	28.54
NSHE284T/TC-6 15HP	3.3	Ø1.875	1.591	0.5	4.62	28.54
NSHE286T/TC-6 20HP	3.3	Ø1.875	1.591	0.5	4.62	28.54
NSHE284T/TC-8 10HP	3.3	Ø1.875	1.591	0.5	4.62	28.54
NSHE286T/TC-8 15HP	3.3	Ø1.875	1.591	0.5	4.62	28.54



				1AP.050.0555.1-10WXY		
				NSHE280 MOTOR	WEIGHT	SCALE
				F-1		1:1
LET.	REVISION	BY	DATE			
	DESIGN	REN XIADHUA				
	REVIEW	XIE XIADLONG				
	APPROVE	YU JIABIN				
	DATE	20170522				